

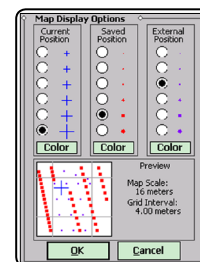
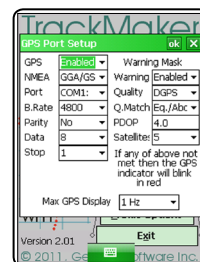
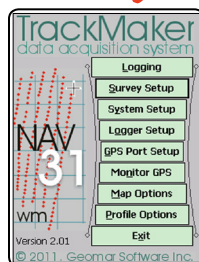
TrackMaker31 data logging system for Windows Mobile

The **TrackMaker31** system for Geonics EM31 consists of two programs: field data acquisition component (NAV31wm) and the Windows 7/XP based data processing software (TrackMaker31).

TrackMaker31 software will allow you to perform surveys faster by covering sites with uniformly spaced lines while avoiding skipping areas, and preventing the potential overlap of survey lines. And with these features also comes the simultaneous full control of the electromagnetic instrument output, data quality, current settings, as well as GPS receiver parameters and GPS warning mask.

It also provides a view of any previously collected data files with a Geonics instrument that is supported by the **TrackMaker** software and will assist the operator to return to previously collected stations.

The **TrackMaker31** system works with virtually any GPS receiver by supporting NMEA messages: GGA, POS, GLL, LLQ, LLK, GGK, and Leica and Trimble Robotics Total Stations, and collects EM31 and GPS data into one file simultaneously, while providing a graphical view of the collected GPS positions to better control the survey line direction. A profile view of the collected EM31 data is provided for the improvement of field data quality analysis.



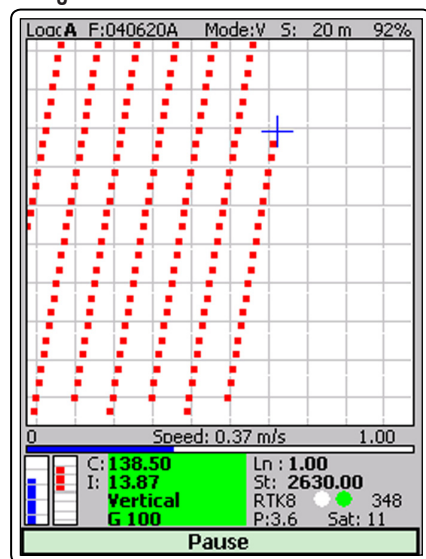
Numerous options for survey procedure and display parameters are available

In the event of any field obstruction you can resume your survey line at a precise location, without using conventional methods of positioning (tapes, stakes, etc.). You can complete your survey even with low visibility or darkness and still maintain full control over the area of coverage and the quality of electromagnetic instrument readings.

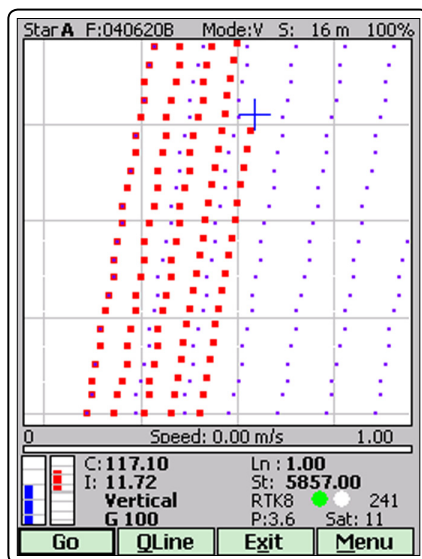
In addition to acquiring EM data the **TrackMaker31** system will convert any Field PC to a stand-alone logger for GPS/DGPS/RTK data collection, taking away the need to purchase additional more expensive GPS components.



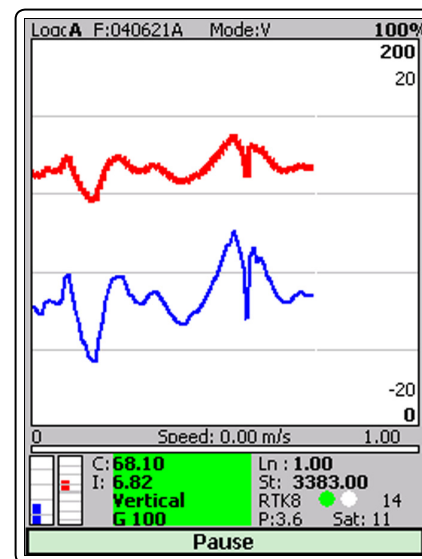
Navigation Mode



Fill In Mode



Profile Mode



GEOMAR SOFTWARE INC.
Tel: 905.306.9215

E-mail: geomar@geomar.com

Tools for the Field Geophysicist

www.geomar.com

GEOMAR
Software Inc.

NAV31 Features (data acquisition program)

Display functions:

- Displays locations of logged GPS positions and current location of an operator in real time while in Navigation mode
- Colours and size of current cursor position, logged and external positions in Navigation mode, and colour and thickness of profiles in Profile mode are user specified
- Scale of map and grid lines interval are user specified (m or ft) and the screen scrolls automatically once the display limit is reached
- EM31 conductivity and Inphase data is displayed with moving graphic bars and in numeric form, EM31 dipole mode and instrument range also monitored
- Current GPS antenna position in Latitude/Longitude, type of differential corrections (DGPS, RTK, Phase), PDOP or other equivalent parameter (depends on NMEA used), number of satellites, and number of GPS positions in the file
- Indicates when the user specified GPS warning mask is surpassed
- Monitors and alarms when the EM31 is disconnected
- Actual speed of the system is continuously displayed
- Display of stations from other TrackMaker files (for any supported instrument) which are entered as an external file allow you to repeat survey layout (i.e. with another instrument), fill in new survey lines, or to re-start survey at proper location
- Positions of interpreted anomalies which are entered as an ASCII file allow you to navigate to points of interest

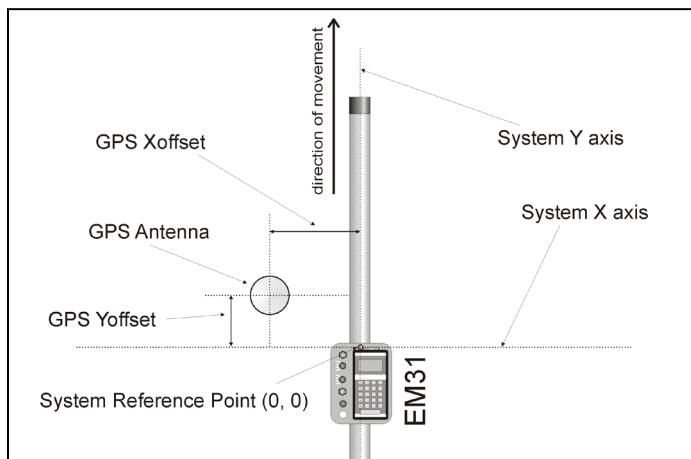
Survey parameters:

- Survey modes supported (Auto, Wheel, or Manual)
- Integration of readings available in Manual mode (up to 100 readings per station)
- Maximum rate of data acquisition is 10 Hz (at 1 Hz GPS output)
- New Line, New Station, Comment entry
- Change of scale in Navigation and Profile modes at any time

GPS functions:

- Configuration of logger serial port to accommodate any GPS settings
- GPS output monitoring
- Support for NMEA messages: GGA, GGA/GSA, GLL, POS, LLQ, LLK, GGK, and stream of Leica and Trimble Robotics Total Stations
- Offset for GPS antenna in any direction, applies to any type of survey (instrument carried by the operator or towed by vehicle)
- Option to act as a stand-alone GPS logger (includes fast auto mode as well as more precise positions averaging), which allows data to be collected in GXY file format (compatible with any TrackMaker or Multi program)

Add navigation capabilities to your EM31 surveys

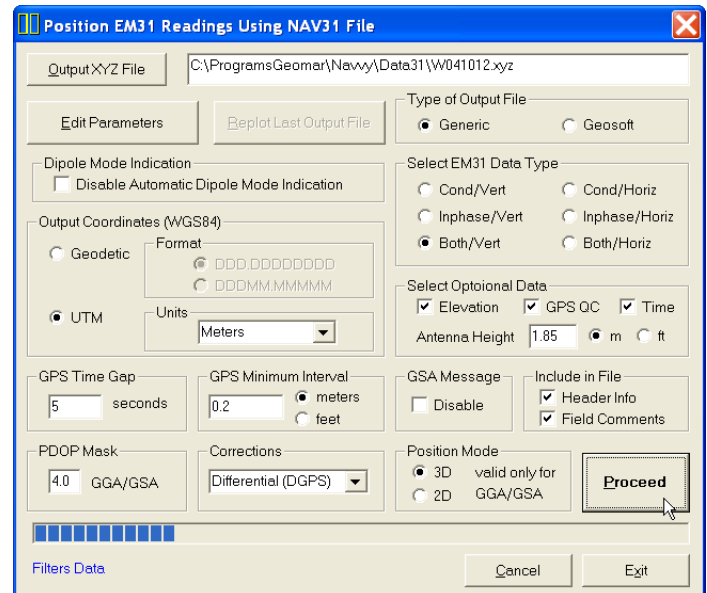


Example of specifying system geometry for EM31 and GPS antenna

TrackMaker31 Features (data processing program)

Position EM31 readings and create XYZ file based on standalone NAV31 file:

- Apply GPS antenna offset in any direction (as entered in the field with option of correcting this parameter during data processing)
- Include elevation data with correction for antenna height
- Filters the quality of positioned data based on GPS parameters as PDOP (or equivalent) and the degree of differential corrections
- Further enhancement of the collected EM31 readings position is obtained by specifying the GPS Time Gap and GPS Minimum Interval.
- Choice of coordinates in generated XYZ file: Geodetic coordinates (Latitude/Longitude in degrees) or in UTM coordinates (meters, feet or US Survey Feet, WGS1984 datum)



Position EM31 readings and create XYZ file based on external GPS file (This function is used when real time GPS differential corrections are not available, or when further post processing of GPS data may improve positioning accuracy. It is assumed that GPS positions are logged in NAV31 and in GPS logger simultaneously.)

- Apply GPS antenna offset in any direction (as entered in the field with option of correcting this parameter during data processing)
- Further enhancement of the collected EM31 readings position is obtained by specifying the GPS Time Gap and GPS Minimum Interval
- Coordinates system, units and GPS positioning accuracy is determined by a content of an external GPS file

Miscellaneous:

- Field QC parameters (Quality Indicator, number of Satellites and PDOP) are written into the generated XYZ file
- Convert TrackMaker31 files to Geonics DAT31 format
- Convert TrackMaker31 files to general format ASCII file
- Convert GXY file to ASCII file containing positions and elevations
- Retrieve and position field comments from TrackMaker31 file
- Apply System Time Constant delay (lag) in generated XYZ file
- Transfer data file from field DOS based field computer to PC
- Edit, view, and save TrackMaker31 file contents